



## PFG – Journal of Photogrammetry, Remote Sensing and Geoinformation Science

Photogrammetrie, Fernerkundung, Geoinformation

Editor-in-Chief: Wolfgang **Kresse**

ISSN: 2512-2789 (print version)

ISSN: 2512-2819 (electronic version)

Journal no. 41064



[RECOMMEND TO LIBRARIAN](#)

[ABOUT THIS JOURNAL](#) [EDITORIAL BOARD](#) [SOCIETY](#) [INSTRUCTIONS FOR AUTHORS](#)

## Instructions for Author

### MANUSCRIPT SUBMISSION

#### Manuscript Submission

Submission of a manuscript implies: that the work described has not been published before; that it is not under consideration for publication anywhere else; that its publication has been approved by all co-authors, if any, as well as by the responsible authorities – tacitly or explicitly – at the institute where the work has been carried out. The publisher will not be held legally responsible should there be any claims for compensation.

#### Permissions

Authors wishing to include figures, tables, or text passages that have already been published elsewhere are required to obtain permission from the copyright owner(s) for both the print and online format and to include evidence that such permission has been granted when submitting their papers. Any material received without such evidence will be assumed to originate from the authors.

#### Online Submission

Please follow the hyperlink “Submit online” on the right and upload all of your manuscript files following the instructions given on the screen.

### TITLE PAGE

#### Title Page

The title page should include:

- ⌘ The name(s) of the author(s)
- ⌘ A concise and informative title

- ✿ The affiliation(s) and address(es) of the author(s)
- ✿ The e-mail address, and telephone number(s) of the corresponding author
- ✿ If available, the 16-digit ORCID of the author(s)

### Abstract

Please provide an abstract of 150 to 250 words. The abstract should not contain any undefined abbreviations or unspecified references.

### Keywords

Please provide 4 to 6 keywords which can be used for indexing purposes.

### TEXT

### Text Formatting

Manuscripts should be submitted in LaTeX. Please use Springer's LaTeX macro package and choose the formatting option "twocolumn".

The submission should include the original source (including all style files and figures) and a PDF version of the compiled output.

LaTeX macro package (zip, 182 kB)

Word files are also accepted.

### Headings

Please use the decimal system of headings with no more than three levels.

### Abbreviations

Abbreviations should be defined at first mention and used consistently thereafter.

### Footnotes

Footnotes can be used to give additional information, which may include the citation of a reference included in the reference list. They should not consist solely of a reference citation, and they should never include the bibliographic details of a reference. They should also not contain any figures or tables.

Footnotes to the text are numbered consecutively; those to tables should be indicated by superscript lower-case letters (or asterisks for significance values and other statistical data).

Footnotes to the title or the authors of the article are not given reference symbols.

Always use footnotes instead of endnotes.

### Acknowledgments

Acknowledgments of people, grants, funds, etc. should be placed in a separate section on the title page. The names of funding organizations should be written in full.

### REFERENCES

#### Citation

Cite references in the text in alphabetical order first, and chronological order second. Some examples:

1. Negotiation research spans many disciplines (Thompson 1990).
2. This result was later contradicted by Becker and Seligman (1996).
3. This effect has been widely studied (Abbott 2002; Barakat et al. 1995a, b; Kelso and Smith 1990; Medvec et al. 1999, 2000).

#### Reference list

The list of references should only include works that are cited in the text and that have been published or accepted for publication. Personal communications and unpublished works should only be mentioned in the text. Do not use footnotes or endnotes as a substitute for a reference list.

Reference list entries should be alphabetized by the last names of the first author of each work.

⌘ Journal article

Gamelin FX, Baquet G, Berthoin S, Thevenet D, Nourry C, Nottin S, Bosquet L (2009) Effect of high intensity intermittent training on heart rate variability in prepubescent children. *Eur J Appl Physiol* 105:731-738.  
<https://doi.org/10.1007/s00421-008-0955-8>

Ideally, the names of all authors should be provided, but the usage of “et al” in long author lists will also be accepted:

Smith J, Jones M Jr, Houghton L et al (1999) Future of health insurance. *N Engl J Med* 965:325–329

⌘ Article by DOI

Slifka MK, Whitton JL (2000) Clinical implications of dysregulated cytokine production. *J Mol Med*. <https://doi.org/10.1007/s001090000086>

⌘ Book

South J, Blass B (2001) *The future of modern genomics*. Blackwell, London

⌘ Book chapter

Brown B, Aaron M (2001) The politics of nature. In: Smith J (ed) *The rise of modern genomics*, 3rd edn. Wiley, New York, pp 230-257

⌘ Online document

Doe J (1999) Title of subordinate document. In: *The dictionary of substances and their effects*. Royal Society of Chemistry. Available via DIALOG.  
[http://www.rsc.org/dose/title of subordinate document](http://www.rsc.org/dose/title%20of%20subordinate%20document).

Accessed 15 Jan 1999

Always use the standard abbreviation of a journal’s name according to the ISSN List of Title Word Abbreviations, see

[ISSN.org LTWA](http://www.issn.org/LTWA)

For authors using EndNote, Springer provides an output style that supports the formatting of in-text citations and reference list.

[EndNote style \(zip, 2 kB\)](#)

## TABLES

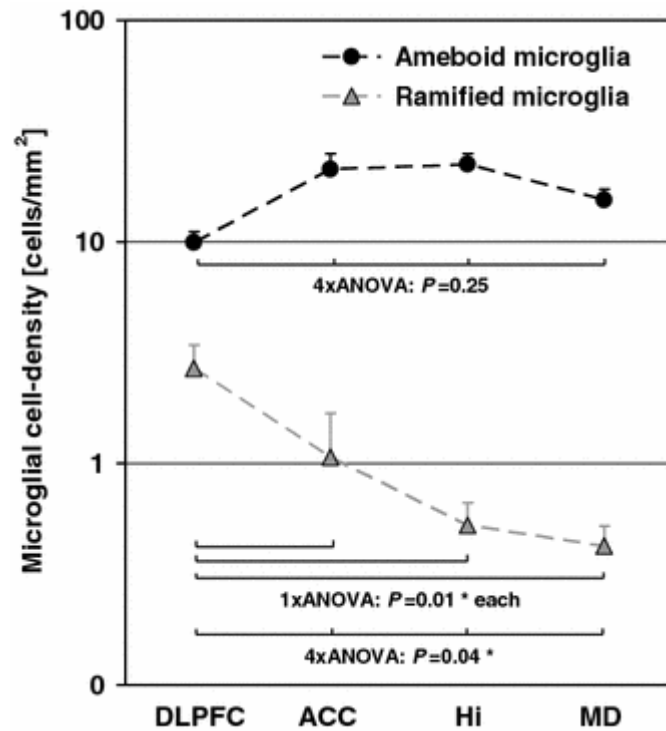
- ⌘ All tables are to be numbered using Arabic numerals.
- ⌘ Tables should always be cited in text in consecutive numerical order.
- ⌘ For each table, please supply a table caption (title) explaining the components of the table.
- ⌘ Identify any previously published material by giving the original source in the form of a reference at the end of the table caption.
- ⌘ Footnotes to tables should be indicated by superscript lower-case letters (or asterisks for significance values and other statistical data) and included beneath the table body.

## ARTWORK AND ILLUSTRATIONS GUIDELINES

## Electronic Figure Submission

- ⌘ Supply all figures electronically.
- ⌘ Indicate what graphics program was used to create the artwork.
- ⌘ For vector graphics, the preferred format is EPS; for halftones, please use TIFF format. MSOffice files are also acceptable.
- ⌘ Vector graphics containing fonts must have the fonts embedded in the files.
- ⌘ Name your figure files with "Fig" and the figure number, e.g., Fig1.eps.

## Line Art



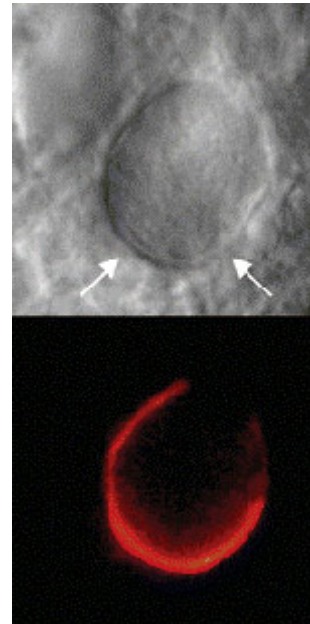
- ⌘ Definition: Black and white graphic with no shading.
- ⌘ Do not use faint lines and/or lettering and check that all lines and lettering within the figures are legible at final size.
- ⌘ All lines should be at least 0.1 mm (0.3 pt) wide.
- ⌘ Scanned line drawings and line drawings in bitmap format should have a minimum resolution of 1200 dpi.
- ⌘ Vector graphics containing fonts must have the fonts embedded in the files.

## Halftone Art

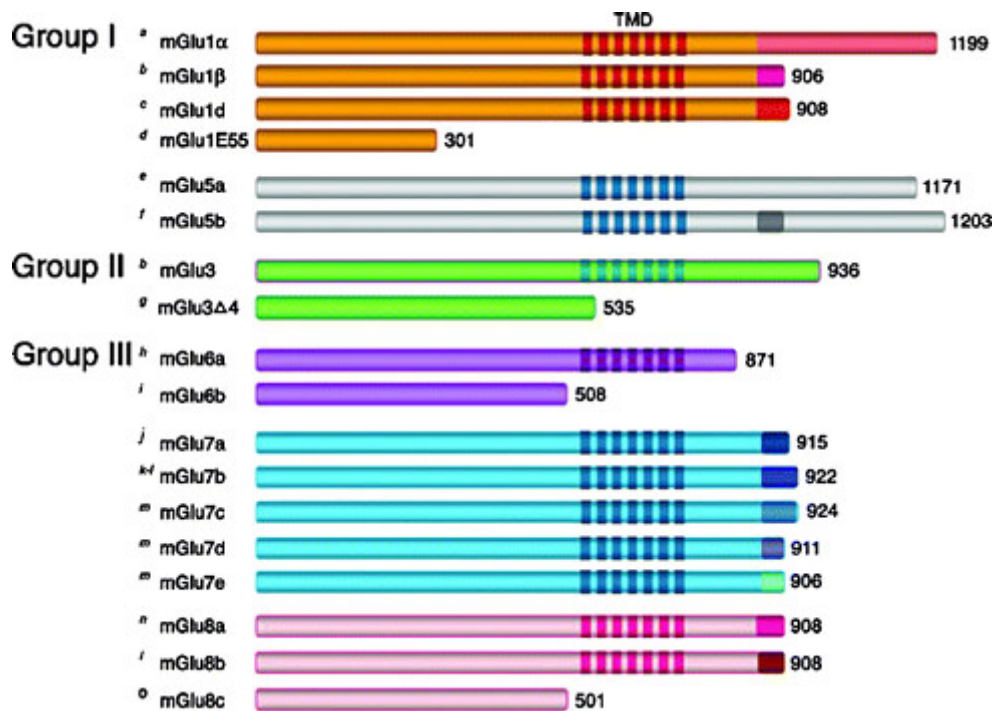
Definition: Photographs, drawings, or paintings with fine shading, etc.

If any magnification is used in the photographs, indicate this by using scale bars within the figures themselves.

Halftones should have a minimum resolution of 300 dpi.



### Combination Art



Definition: a combination of halftone and line art, e.g., halftones containing line drawing, extensive lettering, color diagrams, etc.

Combination artwork should have a minimum resolution of 600 dpi.

### Color Art

Color art is free of charge for online publication.

If black and white will be shown in the print version, make sure that the main information will still be visible. Many colors are not distinguishable from one another when converted to black and white. A simple way to check this is to make a xerographic copy to see if the necessary distinctions between the different colors are still apparent.

If the figures will be printed in black and white, do not refer to color in the captions.

Color illustrations should be submitted as RGB (8 bits per channel).

### Figure Lettering

- ⌘ To add lettering, it is best to use Helvetica or Arial (sans serif fonts).
- ⌘ Keep lettering consistently sized throughout your final-sized artwork, usually about 2–3 mm (8–12 pt).
- ⌘ Variance of type size within an illustration should be minimal, e.g., do not use 8-pt type on an axis and 20-pt type for the axis label.
- ⌘ Avoid effects such as shading, outline letters, etc.
- ⌘ Do not include titles or captions within your illustrations.

### Figure Numbering

All figures are to be numbered using Arabic numerals.

Figures should always be cited in text in consecutive numerical order.

Figure parts should be denoted by lowercase letters (a, b, c, etc.).

If an appendix appears in your article and it contains one or more figures, continue the consecutive numbering of the main text. Do not number the appendix figures,

"A1, A2, A3, etc." Figures in online appendices (Electronic Supplementary Material) should, however, be numbered separately.

### Figure Captions

- ⌘ Each figure should have a concise caption describing accurately what the figure depicts. Include the captions in the text file of the manuscript, not in the figure file.
- ⌘ Figure captions begin with the term Fig. in bold type, followed by the figure number, also in bold type.
- ⌘ No punctuation is to be included after the number, nor is any punctuation to be placed at the end of the caption.
- ⌘ Identify all elements found in the figure in the figure caption; and use boxes, circles, etc., as coordinate points in graphs.
- ⌘ Identify previously published material by giving the original source in the form of a reference citation at the end of the figure caption.

### Figure Placement and Size

Figures should be submitted separately from the text, if possible.

When preparing your figures, size figures to fit in the column width.

For large-sized journals the figures should be 84 mm (for double-column text areas), or 174 mm (for single-column text areas) wide and not higher than 234 mm.

For small-sized journals, the figures should be 119 mm wide and not higher than 195 mm.

### Permissions

If you include figures that have already been published elsewhere, you must obtain permission from the copyright owner(s) for both the print and online format. Please be aware that some publishers do not grant electronic rights for free and that Springer will not be able to refund any costs that may have occurred to receive these permissions. In such cases, material from other sources should be used.

### Accessibility

In order to give people of all abilities and disabilities access to the content of your figures, please make sure that

All figures have descriptive captions (blind users could then use a text-to-speech software or a text-to-Braille hardware)

Patterns are used instead of or in addition to colors for conveying information (colorblind users would then be able to distinguish the visual elements)

Any figure lettering has a contrast ratio of at least 4.5:1

## ELECTRONIC SUPPLEMENTARY MATERIAL

Springer accepts electronic multimedia files (animations, movies, audio, etc.) and other supplementary files to be published online along with an article or a book chapter. This feature can add dimension to the author's article, as certain information cannot be printed or is more convenient in electronic form.

Before submitting research datasets as electronic supplementary material, authors should read the journal's Research data policy. We encourage research data to be archived in data repositories wherever possible.

### Submission

Supply all supplementary material in standard file formats.

Please include in each file the following information: article title, journal name, author names; affiliation and e-mail address of the corresponding author.

To accommodate user downloads, please keep in mind that larger-sized files may require very long download times and that some users may experience other problems during downloading.

### Audio, Video, and Animations

Aspect ratio: 16:9 or 4:3

Maximum file size: 25 GB

Minimum video duration: 1 sec

Supported file formats: avi, wmv, mp4, mov, m2p, mp2, mpg, mpeg, flv, mxf, mts, m4v, 3gp

### Text and Presentations

Submit your material in PDF format; .doc or .ppt files are not suitable for long-term viability.

A collection of figures may also be combined in a PDF file.

### Spreadsheets

Spreadsheets should be submitted as .csv or .xlsx files (MS Excel).

### Specialized Formats

Specialized format such as .pdb (chemical), .wrl (VRML), .nb (Mathematica notebook), and .tex can also be supplied.

### Collecting Multiple Files

It is possible to collect multiple files in a .zip or .gz file.

### Numbering

If supplying any supplementary material, the text must make specific mention of the material as a citation, similar to that of figures and tables.

Refer to the supplementary files as "Online Resource", e.g., "... as shown in the animation (Online Resource 3)", "... additional data are given in Online Resource 4".

Name the files consecutively, e.g. "ESM\_3.mpg", "ESM\_4.pdf".

### Captions

For each supplementary material, please supply a concise caption describing the content of the file.

## Processing of supplementary files

Electronic supplementary material will be published as received from the author without any conversion, editing, or reformatting.

## Accessibility

In order to give people of all abilities and disabilities access to the content of your supplementary files, please make sure that

The manuscript contains a descriptive caption for each supplementary material  
Video files do not contain anything that flashes more than three times per second (so that users prone to seizures caused by such effects are not put at risk)

## AFTER ACCEPTANCE

Upon acceptance of your article you will receive a link to the special Author Query Application at Springer's web page where you can sign the Copyright Transfer Statement online and indicate whether you wish to order OpenChoice and offprints.

Once the Author Query Application has been completed, your article will be processed and you will receive the proofs.

## Copyright transfer

Authors will be asked to transfer copyright of the article to the Publisher (or grant the Publisher exclusive publication and dissemination rights). This will ensure the widest possible protection and dissemination of information under copyright laws.

## Offprints

Offprints can be ordered by the corresponding author.

## Color illustrations

Publication of color illustrations is free of charge.

## Proof reading

The purpose of the proof is to check for typesetting or conversion errors and the completeness and accuracy of the text, tables and figures. Substantial changes in content, e.g., new results, corrected values, title and authorship, are not allowed without the approval of the Editor.

After online publication, further changes can only be made in the form of an Erratum, which will be hyperlinked to the article.

## Online First

The article will be published online after receipt of the corrected proofs. This is the official first publication citable with the DOI. After release of the printed version, the paper can also be cited by issue and page numbers.

## OPEN CHOICE

Open Choice allows you to publish open access in more than 1850 Springer Nature journals, making your research more visible and accessible immediately on publication.

Article processing charges (APCs) vary by journal – [view the full list](#)

Benefits:

Increased researcher engagement: Open Choice enables access by anyone with an internet connection, immediately on publication.

Higher visibility and impact: In Springer hybrid journals, OA articles are accessed 4 times more often on average, and cited 1.7 more times on average\*.



Easy compliance with funder and institutional mandates: Many funders require open access publishing, and some take compliance into account when assessing future grant applications.

It is easy to find funding to support open access – please see our funding and support pages for more information.

\*) Within the first three years of publication. Springer Nature hybrid journal OA impact analysis, 2018.

[Open Choice](#)

[Funding and Support pages](#)

### [Copyright and license term – CC BY](#)

Open Choice articles do not require transfer of copyright as the copyright remains with the author. In opting for open access, the author(s) agree to publish the article under the Creative Commons Attribution License.

[Find more about the license agreement](#)

### RESEARCH DATA POLICY

A submission to the journal implies that materials described in the manuscript, including all relevant raw data, will be freely available to any researcher wishing to use them for non-commercial purposes, without breaching participant confidentiality.

The journal strongly encourages that all datasets on which the conclusions of the paper rely should be available to readers. We encourage authors to ensure that their datasets are either deposited in publicly available repositories (where available and appropriate) or presented in the main manuscript or additional supporting files whenever possible. Please see Springer Nature's information on recommended repositories.

[List of Repositories](#)

[Research Data Policy](#)

General repositories - for all types of research data - such as figshare and Dryad may be used where appropriate.

Datasets that are assigned digital object identifiers (DOIs) by a data repository may be cited in the reference list. Data citations should include the minimum information recommended by DataCite: authors, title, publisher (repository name), identifier.

[DataCite](#)

Where a widely established research community expectation for data archiving in public repositories exists, submission to a community-endorsed, public repository is mandatory. Persistent identifiers (such as DOIs and accession numbers) for relevant datasets must be provided in the paper.

For more information:

[Research Data Policy Frequently Asked Questions](#)

### [Data availability](#)

The journal encourages authors to provide a statement of Data availability in their article. Data availability statements should include information on where data supporting the results reported in the article can be found, including, where applicable, hyperlinks to publicly archived datasets analysed or generated during the study. Data availability statements can

also indicate whether data are available on request from the authors and where no data are available, if appropriate.

Data Availability statements can take one of the following forms (or a combination of more than one if required for multiple datasets):

1. The datasets generated during and/or analysed during the current study are available in the [NAME] repository, [PERSISTENT WEB LINK TO DATASETS]
2. The datasets generated during and/or analysed during the current study are not publicly available due [REASON WHY DATA ARE NOT PUBLIC] but are available from the corresponding author on reasonable request.
3. The datasets generated during and/or analysed during the current study are available from the corresponding author on reasonable request.
4. Data sharing not applicable to this article as no datasets were generated or analysed during the current study
5. All data generated or analysed during this study are included in this published article [and its supplementary information files].

More examples of template data availability statements, which include examples of openly available and restricted access datasets, are available:

#### Data availability statements

Springer Nature provides a research data policy support service for authors and editors, which can be contacted at [researchdata@springernature.com](mailto:researchdata@springernature.com).

This service provides advice on research data policy compliance and on finding research data repositories. It is independent of journal, book and conference proceedings editorial offices and does not advise on specific manuscripts.

#### Helpdesk

### SCIENTIFIC STYLE

Please always use internationally accepted signs and symbols for units (**SI units**).

**Nomenclature:** Insofar as possible, authors should use systematic names similar to those used by Chemical Abstract Service or IUPAC.

**Generic names** of drugs and pesticides are preferred; if trade names are used, the generic name should be given at first mention.

### ETHICAL RESPONSIBILITIES OF AUTHORS

This journal is committed to upholding the integrity of the scientific record. As a member of the Committee on Publication Ethics (COPE) the journal will follow the COPE guidelines on how to deal with potential acts of misconduct.

Authors should refrain from misrepresenting research results which could damage the trust in the journal, the professionalism of scientific authorship, and ultimately the entire scientific endeavour. Maintaining integrity of the research and its presentation is helped by following the rules of good scientific practice, which include\*:

- ⌘ The manuscript should not be submitted to more than one journal for simultaneous consideration.
- ⌘ The submitted work should be original and should not have been published elsewhere in any form or language (partially or in full), unless the new work concerns an expansion of previous work. (Please provide transparency on the re-use of material to avoid the concerns about text-recycling ('self-plagiarism').
- ⌘ A single study should not be split up into several parts to increase the quantity of submissions and submitted to various journals or to one journal over time (i.e. 'salami-slicing/publishing').

- ⌘ Concurrent or secondary publication is sometimes justifiable, provided certain conditions are met. Examples include: translations or a manuscript that is intended for a different group of readers.
- ⌘ Results should be presented clearly, honestly, and without fabrication, falsification or inappropriate data manipulation (including image based manipulation). Authors should adhere to discipline-specific rules for acquiring, selecting and processing data.
- ⌘ No data, text, or theories by others are presented as if they were the author's own ('plagiarism'). Proper acknowledgements to other works must be given (this includes material that is closely copied (near verbatim), summarized and/or paraphrased), quotation marks (to indicate words taken from another source) are used for verbatim copying of material, and permissions secured for material that is copyrighted.
- ⌘ **Important note: the journal may use software to screen for plagiarism.**
- ⌘ Authors should make sure they have permissions for the use of software, questionnaires/(web) surveys and scales in their studies (if appropriate).
- ⌘ Authors should avoid untrue statements about an entity (who can be an individual person or a company) or descriptions of their behavior or actions that could potentially be seen as personal attacks or allegations about that person.
- ⌘ Research that may be misapplied to pose a threat to public health or national security should be clearly identified in the manuscript (e.g. dual use of research). Examples include creation of harmful consequences of biological agents or toxins, disruption of immunity of vaccines, unusual hazards in the use of chemicals, weaponization of research/technology (amongst others).
- ⌘ Authors are strongly advised to ensure the author group, the Corresponding Author, and the order of authors are all correct at submission. Adding and/or deleting authors during the revision stages is generally not permitted, but in some cases may be warranted. Reasons for changes in authorship should be explained in detail. Please note that changes to authorship cannot be made after acceptance of a manuscript.

Upon request authors should be prepared to send relevant documentation or data in order to verify the validity of the results presented. This could be in the form of raw data, samples, records, etc. Sensitive information in the form of confidential or proprietary data is excluded.

\*All of the above are guidelines and authors need to make sure to respect third parties rights such as copyright and/or moral rights.

If there is suspicion of misbehavior or alleged fraud the Journal and/or Publisher will carry out an investigation following COPE guidelines. If, after investigation, there are valid concerns, the author(s) concerned will be contacted under their given e-mail address and given an opportunity to address the issue. Depending on the situation, this may result in the Journal's and/or Publisher's implementation of the following measures, including, but not limited to:

If the manuscript is still under consideration, it may be rejected and returned to the author.

If the article has already been published online, depending on the nature and severity of the infraction:

- an erratum/correction may be placed with the article
- an expression of concern may be placed with the article
- or in severe cases retraction of the article may occur. The reason will be given in the published erratum, expression of concern or retraction note. Please note that retraction means that the article is **maintained on the platform**, watermarked "retracted" and the explanation for the retraction is provided in a note linked to the watermarked article.

The author's institution may be informed

A notice of suspected transgression of ethical standards in the peer review system may be included as part of the author's and article's bibliographic record.

### Fundamental errors

Authors have an obligation to correct mistakes once they discover a significant error or inaccuracy in their published article. The author(s) is/are requested to contact the journal and explain in what sense the error is impacting the article. A decision on how to correct the literature will depend on the nature of the error. This may be a correction or retraction. The retraction note should provide transparency which parts of the article are impacted by the error.

### Suggesting / excluding reviewers

Authors are welcome to suggest suitable reviewers and/or request the exclusion of certain individuals when they submit their manuscripts. When suggesting reviewers, authors should make sure they are totally independent and not connected to the work in any way. It is strongly recommended to suggest a mix of reviewers from different countries and different institutions. When suggesting reviewers, the Corresponding Author must provide an institutional email address for each suggested reviewer, or, if this is not possible to include other means of verifying the identity such as a link to a personal homepage, a link to the publication record or a researcher or author ID in the submission letter. Please note that the Journal may not use the suggestions, but suggestions are appreciated and may help facilitate the peer review process.

### ENGLISH LANGUAGE SUPPORT

For editors and reviewers to accurately assess the work presented in your manuscript you need to ensure the English language is of sufficient quality to be understood. If you need help with writing in English you should consider:

Asking a colleague who is a native English speaker to review your manuscript for clarity.

Visiting the English language tutorial which covers the common mistakes when writing in English.

Using a professional language editing service where editors will improve the English to ensure that your meaning is clear and identify problems that require your review. Two such services are provided by our affiliates Nature Research Editing Service and American Journal Experts. Springer authors are entitled to a 10% discount on their first submission to either of these services, simply follow the links below

English language tutorial

Nature Research Editing Service

American Journal Experts

Please note that the use of a language editing service is not a requirement for publication in this journal and does not imply or guarantee that the article will be selected for peer review or accepted.

If your manuscript is accepted it will be checked by our copyeditors for spelling and formal style before publication.

READ THIS JOURNAL ON SPRINGERLINK

### Online First Articles

[All Volumes & Issues](#)

## FOR AUTHORS AND EDITORS

2017 Impact Factor

**1.085**[Aims and Scope](#)[Submit Online](#)[Open Choice - Your Way to Open Access](#)[Instructions for Authors](#)[Copyright Information](#)

## SERVICES FOR THE JOURNAL

[Contacts](#)[Download Product Flyer](#)

## ALERTS FOR THIS JOURNAL

Get the table of contents of every new issue published in [PFG – Journal of Photogrammetry, Remote Sensing and Geoinformation Science](#).

LOGIN

- Please send me information on new Springer publications in [Remote Sensing/Photogrammetry](#).

