

# 《Interdisciplinary Sciences-Computational Life Sciences》

E-mail: [editor@interdisciplinarysciences.org](mailto:editor@interdisciplinarysciences.org)

ISSN 1913-2751

125 boul. Bromont

Bromont, Quebec

Canada J 2L 2K7

Tel. 1-450-578-3368

Fax 1-450-534-1933

Web: <http://www.springer.com/life+sci/bioinformatics/journal/12539>

<http://interdisciplinarysciences.org>

## Aims & Scope

*Interdisciplinary Sciences--Computational Life Sciences* aims to cover the most recent and outstanding developments in interdisciplinary areas of sciences, especially focusing on computational life sciences, an area that is enjoying rapid development at the forefront of scientific research and technology.

The journal publishes original papers of significant general interest covering recent research and developments. Articles will be published rapidly by taking full advantage of internet technology for online submission and peer-reviewing of manuscripts, and then by publishing OnlineFirst™ through SpringerLink even before the issue is built or sent to the printer.

The editorial board consists of many leading scientists with international reputation, among others, Luc Montagnier (UNESCO, France), Dennis Salahub ( University of Calgary, Canada), Weitao Yang ( Duke University, USA). Prof. Dongqing Wei at the Shanghai Jiatong University is appointed as the editor-in-chief; he made important contributions in bioinformatics and computational physics and is best known for his ground-breaking works on the theory of ferroelectric liquids. With the help from a team of associate editors and the editorial board, an international journal with sound reputation shall be created.

## Instructions for Authors

**Copyright:** It is a condition of publication that manuscripts submitted to this journal have not been published and will not be simultaneously submitted or published elsewhere. Plagiarism is strictly forbidden, and by submitting the article for publication the authors agree that the publishers have the legal right to take appropriate action against the authors, if plagiarism is discovered. By submitting a manuscript the authors agree that the copyright of their article is transferred to the publishers if and when the article is accepted for publication.

## Manuscript submission

All manuscripts must be written in English. Authors are urged to submit their manuscripts online (as PDF or Word files) to facilitate quick and efficient processing. Electronic submission substantially reduces the editorial processing and reviewing times and shortens overall publication times.

Please log directly onto the site using the link below and upload your manuscript following the on-screen instructions.

SUBMIT ONLINE

Manuscripts can also be submitted openly by mail to editor without prior invitation at the following address

### Prof. Dongqing Wei

Editor-in-Chief, Interdisciplinary Sciences  
College of Life Sciences and Biotechnology  
Shanghai Jiaotong University  
800 Dongchuan Road , Minhang District  
Shanghai , China 200240  
Tel/Fax: (+86)-21-3420-4573  
E-mail: editor@interdisciplinariesciences.org or dqwei@sjtu.edu.cn

**General Remarks:** The journal accepts original **Research Articles**, **Short Communications** for publication of preliminary reports of novel significance, and **Review Articles** giving a fresh and needed overview of the state-of-the-art and recent development of an important field. Other types of manuscripts need to be discussed with the Editor-in-Chief prior to submission. All manuscripts must be written in English. Manuscripts not submitted in English will be returned to the author. A **Research Article** should not exceed 8 journal pages (24 manuscript pages in double-spaced A4 or US Letter (8.5x11 inches) format); a **Short Communication** should be limited to 4 journal pages (12 manuscript pages); a **Review Article** should be limited to 12 journal pages (36 manuscript pages). Manuscripts in MS WORD or similar programs are preferred; if sent by mail, the original laser or ink jet printout needs to be accompanied by two copies of the manuscript. All pages should be numbered. Abbreviations should be defined the first time they are used, while a list of all abbreviations should be provided.

**Manuscript Organization:** The manuscript should be divided as: Title page, abstract and the main text. The text may be subdivided further according to the areas to be discussed. After the text follows the Experimental and Reference sections. The first page should contain the title, the authors' names, with an asterisk to mark the name

of the principal author where the first name is placed first and family name last.

**Conflict of Interest:** Financial contributions to the work being reported should be clearly acknowledged, as should any potential conflict of interest.

**Abstract:** The abstract should not exceed 250 words and it should condense the essential features of the article.

**Key Words:** Authors must supply up to eight key words along with their manuscript.

**Text:** The main text should begin on a separate page and it may be subdivided into separate sections. The reference numbers should be given in square brackets in the text. Acknowledgements should be kept to a minimum.

**Tables:**

- Data Tables should be submitted in Microsoft Excel or in Microsoft Word table format.
- Each table should include a title/caption explaining what the table shows. Detailed legends may then follow.
- Tables should be given on separate pages with indications on the left hand margin to the text, as to the appropriate placement of the tables.
- Tables should not contain vertical rules.
- Columns and rows of data should be made visibly distinct by ensuring the borders of each cell display as black lines.
- Tables should be numbered consecutively in order of their citation in the body of the text, with Arabic numerals.
- If a reference is cited in both the table and text, insert a lettered footnote in the table to refer to the numbered reference in the text.
- Tabular data provided as additional files can be submitted as an Excel spreadsheet.

**Figures / Illustrations:**

Artwork Guidelines

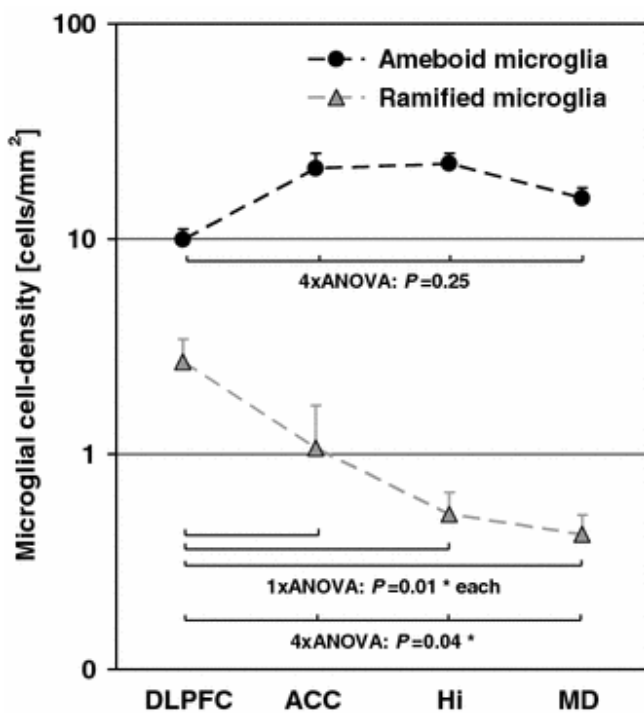
For the best quality final product, it is highly recommended that you submit all of your artwork – photographs, line drawings, etc. – in an electronic format. Your art will then be produced to the highest standards with the greatest accuracy to detail. The published work will directly reflect the quality of the artwork provided.

## Electronic Figure Submission

- Supply all figures electronically.
- Indicate what graphics program was used to create the artwork.
- For vector graphics, the preferred format is EPS; for halftones, please use TIFF format. MS Office files are also acceptable.
- Vector graphics containing fonts must have the fonts embedded in the files.
- Name your figure files with "Fig" and the figure number, e.g., Fig1.eps.

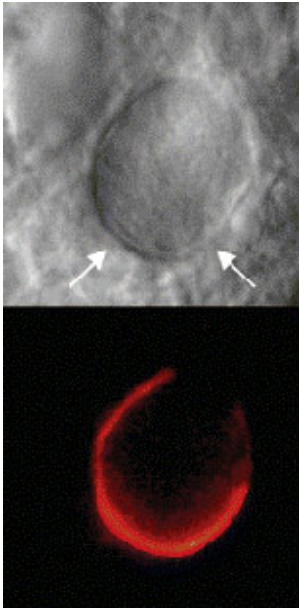
## Line Art

- Definition: Black and white graphic with no shading.
- Do not use faint lines and/or lettering and check that all lines and lettering within the figures are legible at final size.
- All lines should be at least 0.1 mm (0.3 pt) wide.
- Line drawings should have a minimum resolution of 1200 dpi.
- Vector graphics containing fonts must have the fonts embedded in the files.



## Halftone Art

- Definition: Photographs, drawings, or paintings with fine shading, etc.
- If any magnification is used in the photographs, indicate this by using scale bars within the figures themselves.
- Halftones should have a minimum resolution of 300 dpi.



## Combination Art

- Definition: a combination of halftone and line art, e.g., halftones containing line drawing, extensive lettering, color diagrams, etc.
- Combination artwork should have a minimum resolution of 600 dpi.

## **Color Art**

- Color art is free of charge for online publication. In the printed journal, the following fixed rates for color in print will be applied: \$200 US for the first color figure and \$150 for each additional color figure. These charges will be waived for articles published in the first two issues.
- If black and white will be shown in the print version, make sure that the main information will still be visible. Many colors are not distinguishable from one another when converted to black and white. A simple way to check this is to make a xerographic copy to see if the necessary distinctions between the different colors are still apparent.
- If the figures will be printed in black and white, do not refer to color in the captions.
- Color illustrations should be submitted as RGB (8 bits per channel).

## **Figure Lettering**

- To add lettering, it is best to use Helvetica or Arial (sans serif fonts).
- Keep lettering consistently sized throughout your final-sized artwork, usually about 2–3 mm (8–12 pt).
- Variance of type size within an illustration should be minimal, e.g., do not use 8-pt type on an axis and 20-pt type for the axis label.
- Avoid effects such as shading, outline letters, etc.
- Do not include titles or captions within your illustrations.

## **Figure Numbering**

- All figures are to be numbered using Arabic numerals.
- Figures should always be cited in text in consecutive numerical order.
- Figure parts should be denoted by lowercase letters (a, b, c, etc.).
- If an appendix appears in your article and it contains one or more figures, continue the consecutive numbering of the main text. Do not number the appendix figures, "A1, A2, A3, etc."

## Figure Captions

- Each figure should have a concise caption describing accurately what the figure depicts.
- Figure captions begin with the term Fig. in bold type, followed by the figure number, also in bold type.
- No punctuation is to be included after the number, nor is any punctuation to be placed at the end of the caption.
- Identify all elements found in the figure in the figure caption; and use boxes, circles, etc., as coordinate points in graphs.
- Identify previously published material by giving the original source in the form of a reference citation at the end of the figure caption.

## Figure Placement and Size

- When preparing your figures, size figures to fit in the column width.
- The figures should be 39 mm, 84 mm, 129 mm, or 174 mm wide and not higher than 234 mm.

**Chemical Structures:** Chemical structures must be prepared according to the guidelines below.

Structures should be prepared using a suitable drawing program e.g. ChemDraw and provided as separate file, submitted both on disk and in printed formats.

Numbers in bold should identify all chemical structure. If a name is also used to describe the compound, the associated number in bold should be in parenthesis, e.g. “compound (**1**)”.

### Structure Drawing Preferences:

[As according to the American Chemical Society(ACS) style sheet]

#### *Drawing Settings:*

Chain angle 120°

Bond spacing 18% of width

Fixed length 14.4 pt ( 0.500cm, 0.2in)

Bold width 2.0 pt ( 0.071cm, 0.0278in)

Line width 0.6 pt ( 0.021cm, 0.0084in)

Margin width 1.6 pt ( 0.096cm)

Harsh spacing 2.5 pt ( 0.088cm, 0.0347in)

*Text settings:*

Font Times New Roman / Helvetica

Size 10pt

*Under the Preference Choose:*

Units points

Tolerances 3 pixels

*Under Page Setup Use:*

Paper US letter

Scale 100%

**Experimental Section:** Experimental descriptions must be as concise as possible. The title of an experiment should include the chemical name and compound number and use of chemical formulas and standard abbreviations is encouraged. Sufficient spectral data such as NMR data should be included in the Experimental Section for all new compounds reported. Adequate evidence to establish the degree of purity must be provided for all target.

**References:** the list of references should only include works that are cited in the text and that have been published or accepted for publication. Personal communications should only be mentioned in the text. In the text, references should be cited by author and year (e.g. Hammer 1994; Hammer and Sjöqvist 1995; Hammer et al. 1993) and listed in alphabetical order in the reference list.

Journal articles

Grissom LE, Harcke HT (1997) Ultrasonography of nondevelopmental dysplasia of the hips. *Pediatr Radiol* 27:70-74

Single contributions in a book

Name(s) and initial(s) of all authors; year; title of article; editor(s); title of book; edition; volume number; publisher; place of publication; page numbers:

Example:

Buchanan S, Michel H (1990) Investigation of quinone reduction in *Rhodospseudomonas viridis* by FTIR difference spectroscopy and X-ray diffraction analysis. In: Michel-Beyerle M-E (ed) Springer series in biophysics, vol 6. Springer, Berlin, Heidelberg New York, pp 75–85

## Book

Name and initial(s) of all authors; year; title; publisher; place of publication:

Example:

Miller OJ, Therman E (2001) Human chromosomes. Springer, Berlin Heidelberg New York

## Web pages

1. Article by DOI (with page numbers):

Slifka MK, Whitton JL (2000) Clinical implications of dysregulated cytokine production. *J Mol Med* 78:74–80.  
doi: 10.1007/s001090000086

2. Article by DOI (before issue publication with page numbers):

Slifka MK, Whitton JL (2000) Clinical implications of dysregulated cytokine production. *J Mol Med* (in press).  
doi: 10.1007/s001090000086

3. Article in electronic journal by DOI (no paginated version):

Slifka MK, Whitton JL (2000) Clinical implications of dysregulated cytokine production. *Dig J Mol Med*. doi: 10.1007/s801090000086

compounds. Quantitative biological data are required for all final/target compounds.

**Page Charges:** No page charges will be levied to authors.

**Language Editing:** Manuscripts submitted containing many English typographical errors will not be published. Authors from non-English language countries are advised to use professional services prior to submitting their manuscript to the Journal.

**Proofs:** Authors are sent page proofs. To avoid delays in publication, proofs should be checked immediately for typographical errors and returned within 48 hours. Authors will be charged for excessive changes made at the page proof stage.

**Reprints:** Each first named author will receive by e-mail a free copy of their article as a PDF file. The PDF file is a watermarked version of the published article which is exclusively for the author's own use and may not be copied or distributed. Reprints may be ordered from the Publisher prior to publication of the article.

**Reviewing and Promptness of Publication:** All papers submitted for publication will be immediately subjected to editorial scrutiny, usually in consultation with members of the Editorial Board. Every effort will be made to assess the papers quickly. The papers will be typeset and the proofs dispatched to the authors normally within 4 weeks of their acceptance.



<http://www.springer.com/journal/12539>

Interdisciplinary Sciences: Computational Life Sciences

Editor-in-Chief: D.-Q. Wei

ISSN: 1913-2751 (print version)

ISSN: 1867-1462 (electronic version)

Journal no. 12539